

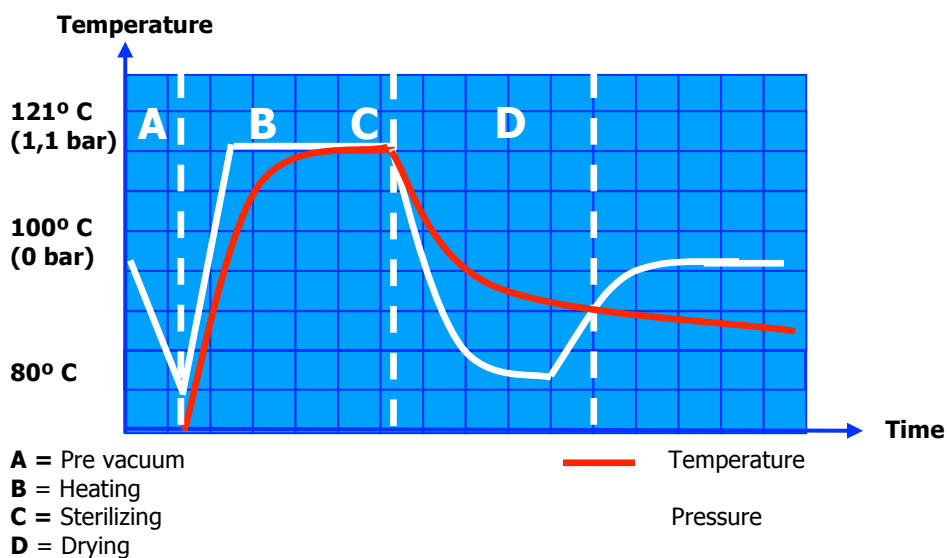
CLINOCLAV steam sterilizer AH-21 L



Advantages:

- Agar mode (40-80°C)
- Programmable auto-start (24 h)
- Control software
- Program for liquids
- Connection to PC (USB)
- Heart probe (optional)

Sterilization cycle graph



CLINOCLAV steam sterilizer AH-21 L

Applications: Suitable to sterilize:

Unwrapped and wrapped solids, small porous objects and hollow ware type B (slightly deep and broad cavities). Glass, liquids, metallic objects, waste bags

Features:

Pre-vacuum prior sterilization and vacuum system for final drying
4,5 L and 2 litres feeding and condensates reservoirs.

Automatic chamber filling.

It includes RS-232 connection for printer and PC

Safety:

Safety valve and thermostat.

Door hydraulic blocking system.

Open lid sensor

Supplied with the following accessories:

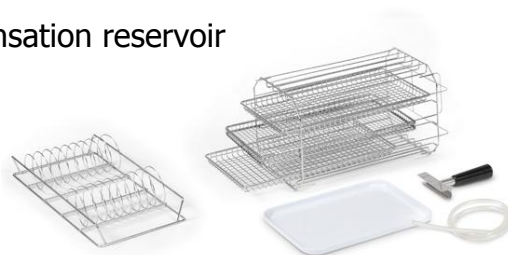
Tray support for four trays

Three stainless steel perforated trays: Ref. BAH-21.

A holding clamp.

Flexible tube with quick connection to drain condensation reservoir

One bag support and an auxiliary tray



Reference	Capacity	Ø x H.	H x L x D in cm	Temp. °C	Max. bar	Power W	Weight Kg.	Time range
AH-21 L	21 L	25 x 43 cm	42,5 x 59 x 68	100-134	2,1	2.000	55	3 a 180 min.

Clinoclav steam sterilizer AH-21 L Accessories

Table top printer

It prints number of program, number of cycle, temperature, date and hour of the run. Error messages are also printed.



Reference: ITS

Flexible "Heart" probe PT-100

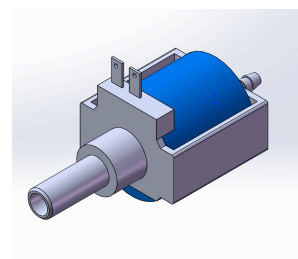
Recommended for sterilizing liquids in flasks of 1 L or bigger. The control is done from the microprocessor. This accessory should be installed in factory.



Reference: PT-2

Automatic filling pump

To feed the autoclave from an external container. This accessory must be installed at our facilities.



Reference: KLL-21

PC connection kit for RS232

Kit for the connection and use of the communication software between the equipment and the PC, through the RS232 interface.

It includes: Female USB-RS232 Converter. CD with corresponding drivers included
Male-male DB-9 cable to connect converter and the equipment



Reference: SOFT-RS232

