

Steam sterilizer AHS-50 / AHS-75-DRY



printer



Optional PT-2

Software



(optional)

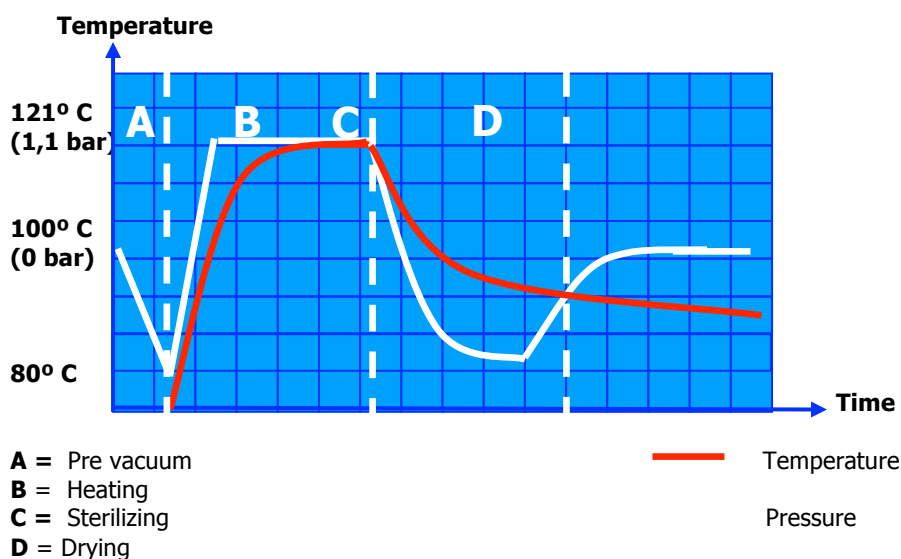


Optional

Advantages:

- Agar mode (40-80° C)
- Connection to PC (USB)
- Heart probe (optional)
- Programmable auto-start (24 h)
- Control software (optional)
- Automatic drying

Sterilization cycle graph



Steam sterilizer AHS-50 / AHS-75 DRY

Intended use:

Suitable to sterilize: wrapped or unwrapped solids, small porous elements and hollow elements type B (slightly deep and broad cavities). glass, plastic, metallic elements, waste bags.

Features:

Chamber, lid and closure made of AISI-304 stainless steel
 Total control by microprocessor: Ten sterilization programs.
 Six programs are user free.
 7 Litres feeding water reservoir.
 Automatic water filling.
 Automatic drying
 Includes RS-232 port to connect to a printer/PC.

Safety:

Safety valve and thermostat.
 Door hydraulic blocking system.
 Open lid sensor

Supplied with the following accessories:

Support for five trays
 Two perforated trays made of stainless steel
Ref. BAH-50-B (AHS-50), Ref. BAH-75-B (AHS-75)
 Auxiliar tray

Reference	Capacity	Ø x H.	H x L x D in cm	Temp. °C	Max. bar	Power W	Weight Kg.	Time range
AHS-50 DRY	55 L	40 x 40 cm	63 x 76 x 78	100-134	2,1	2.800	125	3 a 180 min.
AHS-75 DRY	75 L	40 x 60 cm	63 x 76 x 98	100-134	2,1	3.200	140	3-180 min.

Steam sterilizer AHS-50/75 DRY Accessories

Table top printer

It prints number of program, number of cycle, temperature, date and hour of the run. Error messages are also printed.



Reference: ITS

Flexible "Heart" probe PT-100

Recommended for sterilizing liquids in flasks of 1 L or bigger. The control is done from the microprocessor. This accessory should be installed in factory.



Reference: PT-2

Sterilisation control tape

Sterilisation indicator tape.



Reference: TEST-CT

Steam sterilizer AHS-50/75 DRY Accessories

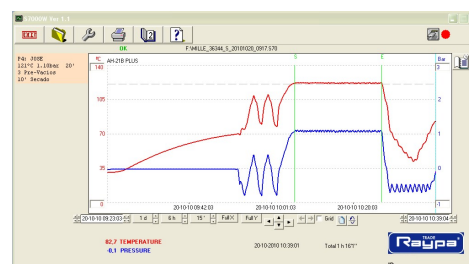
PC connection kit for RS232

Kit for the connection and use of the communication software between the equipment and the PC, through the RS232 interface.

It includes: Female USB-RS232 Converter. CD with corresponding drivers included
Male-male DB-9 cable to connect converter and the equipment



Reference: SOFT-RS232



Automatic filling pump

To feed the autoclave from an external container or directly from a water source distilled.
This accessory must be installed at our facilities.

Reference: KLL

