



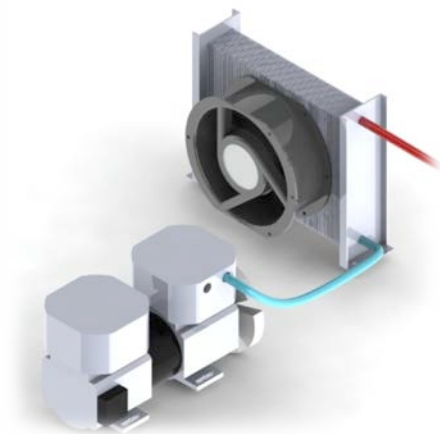
## AE-B Range with Pre-Vacuum and Drying Sterilization for hollow-ware, wrapped and porous elements

**AE-B Range** – Sterilization of hollow-ware, wrapped and porous elements that require pre-vacuum and final drying.

## Operating Principal

The purpose of the sterilization with pre-vacuum is the efficient steam penetration throughout the entire load. This performance is achieved with a vacuum pump, which removes air by fractioned pre-vacuum.

A built-in cooling system by radiator coil enables a better performance of the vacuum pump, removing air pockets from all load types.



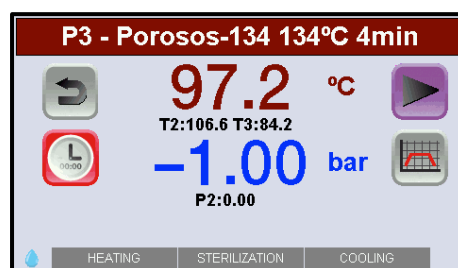
Immediate production of steam through the built-in steam generator allows optimization of cycle times.



Touch Screen Display – Brand new Touch Screen color display for an easy programming and parameters selection for sterilization process.



Main screen



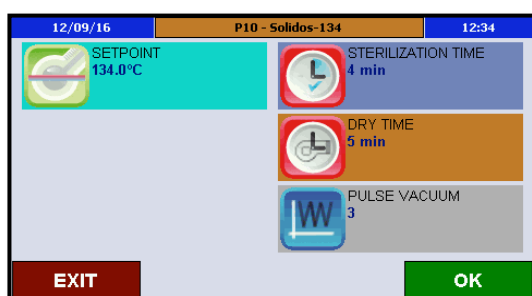
Sterilization screen

Programs – Easy to operate with 12 pre-defined programs

Nº Program	Program name	Nº Pre-vacuum	Temperature (°C)	Sterilization time (min.)	Drying time (min.)
P1	Helix-Bowie&Dick Test	3	134	4'	4'
P2	Vacuum Test	1	-	-	-
P3	Porous-134	3	134	4'	10'
P4	Prion-134	3	134	18'	10'
P5	Porous-121	3	121	20'	10'
P6	Hollowware-134°C	3	134	4'	5'
P7	Hollowware -121°C	3	121	20'	5'
P8	Wrapped-134°C	1	134	4'	5'
P9	Wrapped -121°C	1	121	20'	5'
P10	Solids-134°C	1	134	4'	5'
P11	Solids -121°C	1	121	20'	5'
P12	Flash-134°C	1	134	3'	1'

Up to 50 programs user-defined with the following parameters setting:

- Sterilization temperature
- Sterilization time
- Drying time
- Number of pre-vacuum



Parameters setting screen

Water Filling – Pure water for sterilization can be added manually into the water pan. Automatic filling is also available by connecting the device to pure mains water.



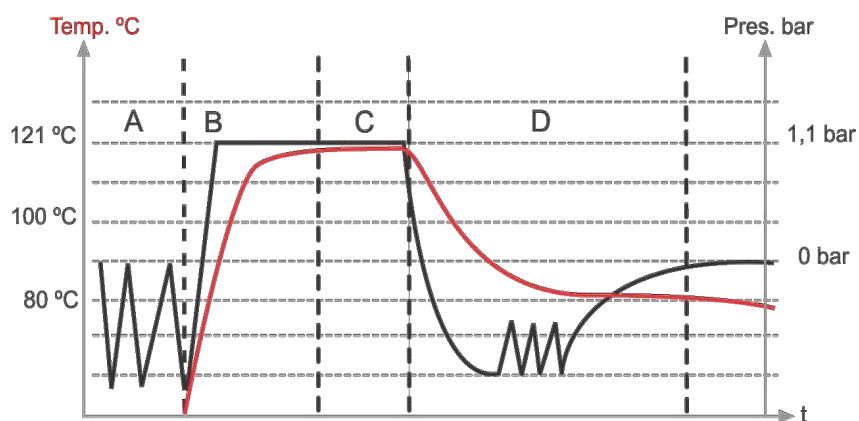
## Sterilization Process

Heating Stage – Fast saturated steam production by means of a powerful built-in steam generator.

Pre-vacuum Stage – Vacuum pump with built-in cooling system by radiator coil provides a better vacuum performance.

Sterilization Control – A PT-100 temperature probe controls the chamber temperature, with the possibility of installing another flexible PT-100 temperature probe for liquid programs.

Drying Stage – Powerful heating jacket together with fractionated pre-vacuum provides a fast and intense drying.



Security – All safety standards are covered with safety valve, safety thermostat and safety pressure switch, door opening prevention system in case of overpressure, open door sensor and water level detector. EU Directive and Standards:

2014/35/UE *Low Voltage*

2014/30/UE *Electromagnetic Compatibility*

2014/68/UE *Pressure Equipment*

EN-61010-1

EN-61010-2-040

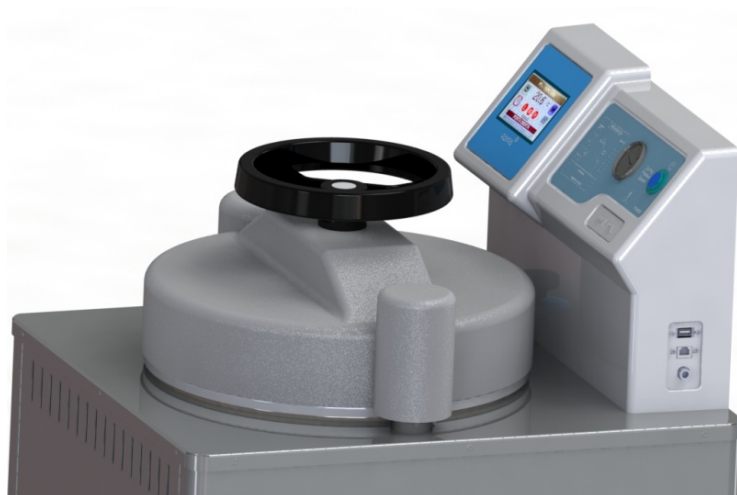
EN-61326

AD 2000 Merkblatt

## Communications and Documentation

USB Port – For electronic storage of process data to a USB flash drive.

Ethernet Port – For live monitoring with direct data storage. It is needed the customized software SOFT-SW8000.



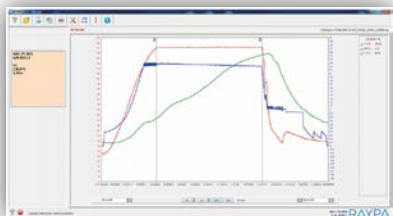
Integrated Printer – For quality printouts after each cycle. Intervals can be adjustable. Printer has to be requested before ordering.

## Technical Data

Reference	Useful capacity (L)	Ø x H (cm)	FxAxH (cm)	Temp. (°C)	Max. pressure (bar)	Power (W)	Weight (Kg)	Ste. Time (min.)
AE-50-B	50	30 x 70	56 x 51 x 130	100 - 134	2,1	3600	110	3 - 180
AE-75-B	75	40 x 60	73 x 62 x 119	100 - 134	2,1	3600	140	3 - 180
AE-110-B	110	40 x 85	73 x 63 x 144	100 - 134	2,1	6000	180	3 - 180
AE-150-B	150	50 x 75	85 x 76 x 140	100 - 134	2,1	6000	265	3 - 180

## Accessories

PC connection by ETHERNET (Ref. SOFT-SW8000)  
(Ref. IT/TS)



Integrated Printer



Baskets Crane (Ref. ELEV-CLAV)



Baskets (Ref. CV)

