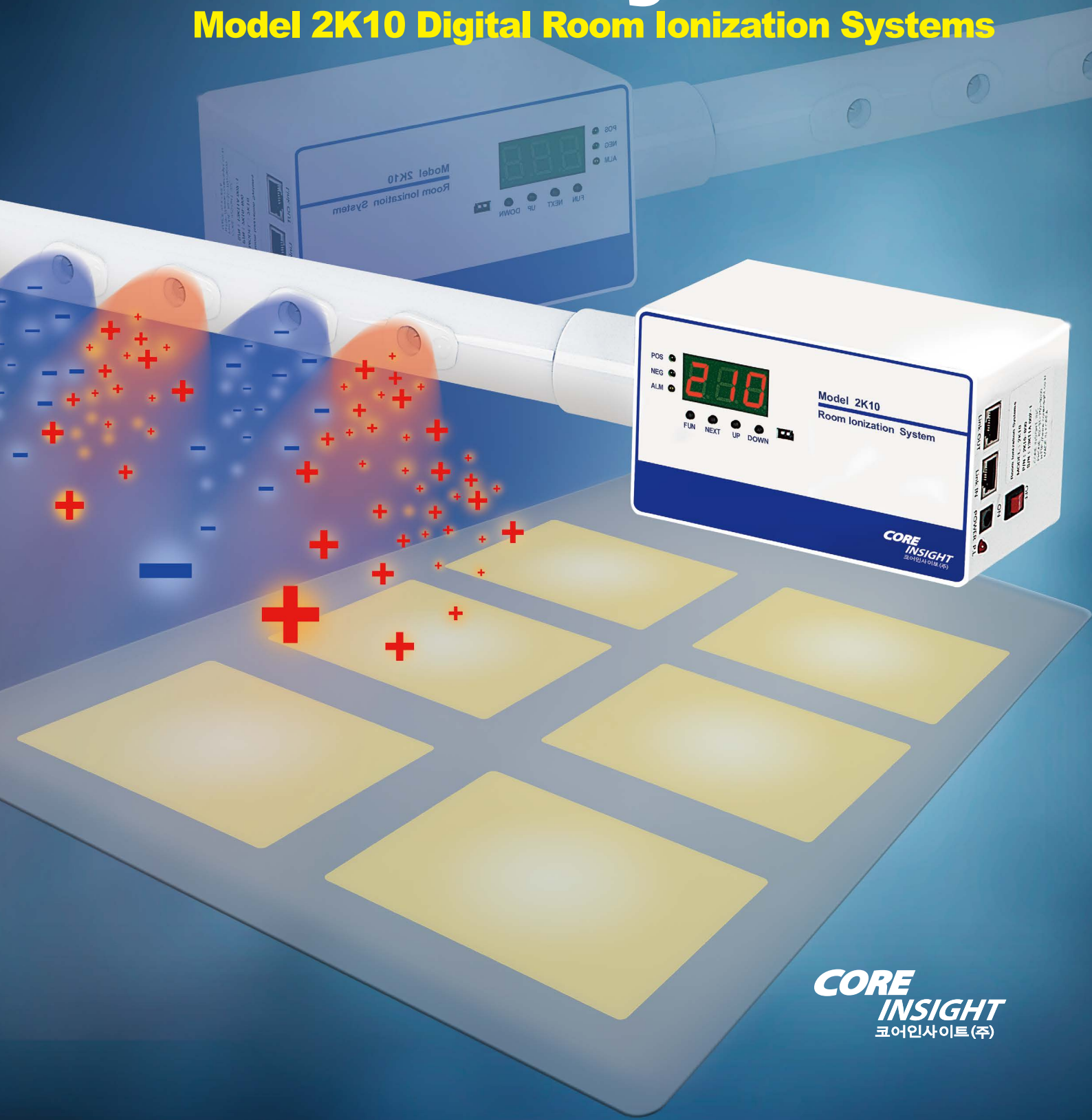


Alternative Room Ionization Systems

Model 2K10 Digital Room Ionization Systems



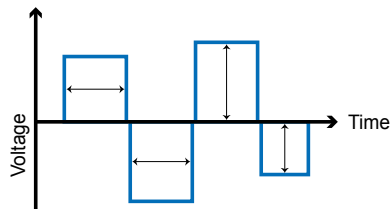
Model 2K10 *Digital Room Ionization Systems*

Symmetrical Dual Bar Systems

Synchronized Ion Emitting Operation
 Large Space or Room Ionization
 Master & Slave Dual Bar System

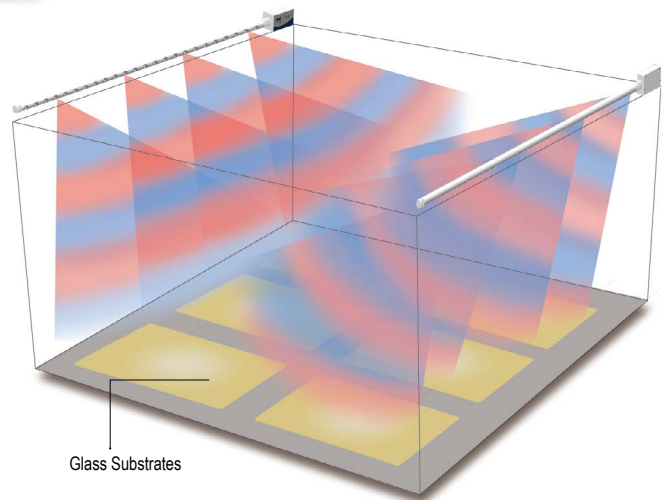
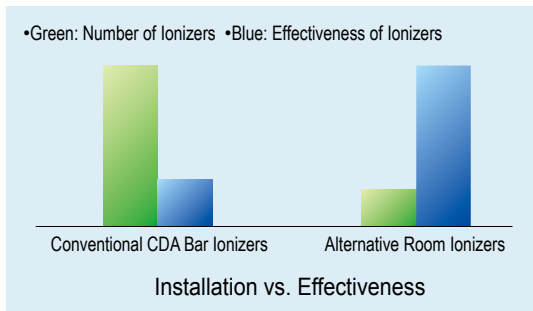
Features

High Ion Current Output for FPD Industry
 Microprocessor Based Digital Platform
 Voltage Adjustment for Both Polarities
 Timing Adjustment for Both Polarities
 Remote Controller Adjustment



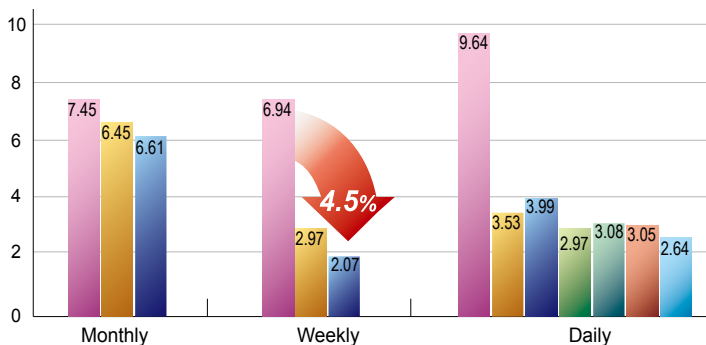
Advantage of Alternative Room Ionization

Highly Effective to Prevent Particle Attractions
 and ESD Damage on FPD
 Large Area/Room Neutralization
 Very Low Operation Cost
 No CDA Requirement



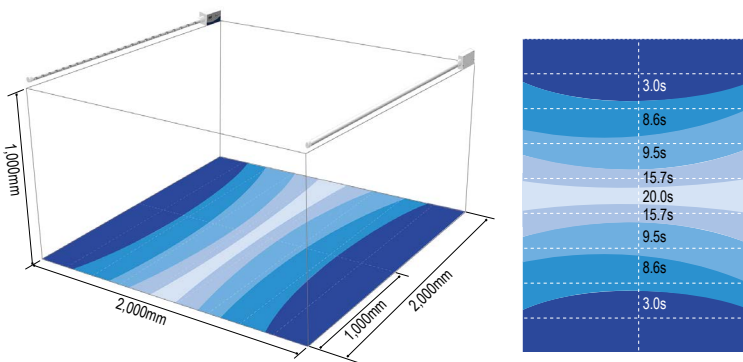
Yield Improvement

Using with alternative room ionization systems, FPD manufacturing process improves their yield from 6.69% down to 2.03% within two weeks and this improvement constantly maintaining in mass production. Particle contamination and ESD problems are solved by this new technology.





Installation Examplet



Ionizer Test Result by CPM

Application Notes

Contamination and ESD in FPD are becoming and rising issues due to their panel design shrinks, higher definition and faster refresh speed rate changes of display panel. Glass plate getting bigger, G8 2,160 x 2,460 sq mm and technical element changes its sensitivities against contamination and ESD.

General ESD control methodology do not working properly in FPD environment due to this was designed for conductive wafer, IC and relatively small objects. Static control in FPD industry requires different strategy. Model 2K10, innovative designed for fast, large area discharge in FPD environment. Dual symmetrical ionization system produce extremely large amount of ions using with pulsed DC technology. Model 2K10 neutralizes large insulator materials such as G8 glass plate and process environment insulator parts.

Conveniences

- Daisy-Chain Power Distribution
- Master/Slave Mode Network Control Systems
- Emitter Point Cleaning Brushes
- Very Easy Emitter Point Replacement

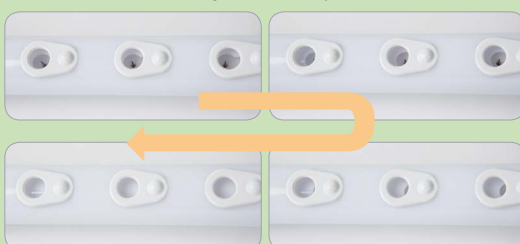
Emitter Points Cleaning Process



Push Button

Cleaning Brush

Emitter Point Cleaning Process by Hand Push



Easy Replacement Emitter Points



Emitter Points Loaded

Emitter Points Unloaded



Room Ionizer Controller

- Voltage Adjustment for Both Polarities
- Timing Adjustment for Both Polarities
- Alarm Level Adjustment
- Master/Slave Selection

Power/Com Port

- Master/Slave Communication Port
- Power Input: 24V DC
- Power On LED: Red
- Power Switch



Easy to Install Designed Bracket

Optional Accessories



Remote Controller

Remote Controller
Communication and output
parameters adjustment
Exact same interface

Alarm Multiport

- Power On/Off Monitoring
- Abnormal Status Alarm
- HV Output Alarm
- 5 Room System Monitoring
- 2 BR Bar System Monitorin



Standard Accessories



Specifications

Input Voltage	24V DC, 20 Watt Maximum
Output Voltage	13kV DC, 100V Resolution Adjust
Length	500~3000mm, custom size available
Timing	0.1~99.9 sec for each polarity 0.1 Hz resolution adjustable
Ion Emission	Pulsed DC technology, Standby Mode
Balance	< ±50V, User/Application Define Balance Adjust
Emitter Point	Tungsten 99.99%
Display	3 Digit FND Display Voltage Setting, Voltage Output, Timing Setting, Output Timing, Alarm Setting HV Output Error, Power Error Current output, HV output error
Alarm	Multi emitter point cleaning brush
Cleaning	Back Red LED Power ON, Front Green LED
LED	HV Switching, Yellow LED Alarm
Enclosure	ABS Case, Polycarbonate Bar
Warranty	One year
Operating	15~35°C, 20~85% RH

Product Length and Detail Sizes

2K10-500		752.21mm
2K10-800		992.21mm
2K10-1000		1,232.21mm
2K10-1500		1,712.21mm
2K10-1700		1,952.21mm
2K10-2000		2,172.21mm
2K10-2500		2,652.21mm
2K10-3000		3,132.21mm

