

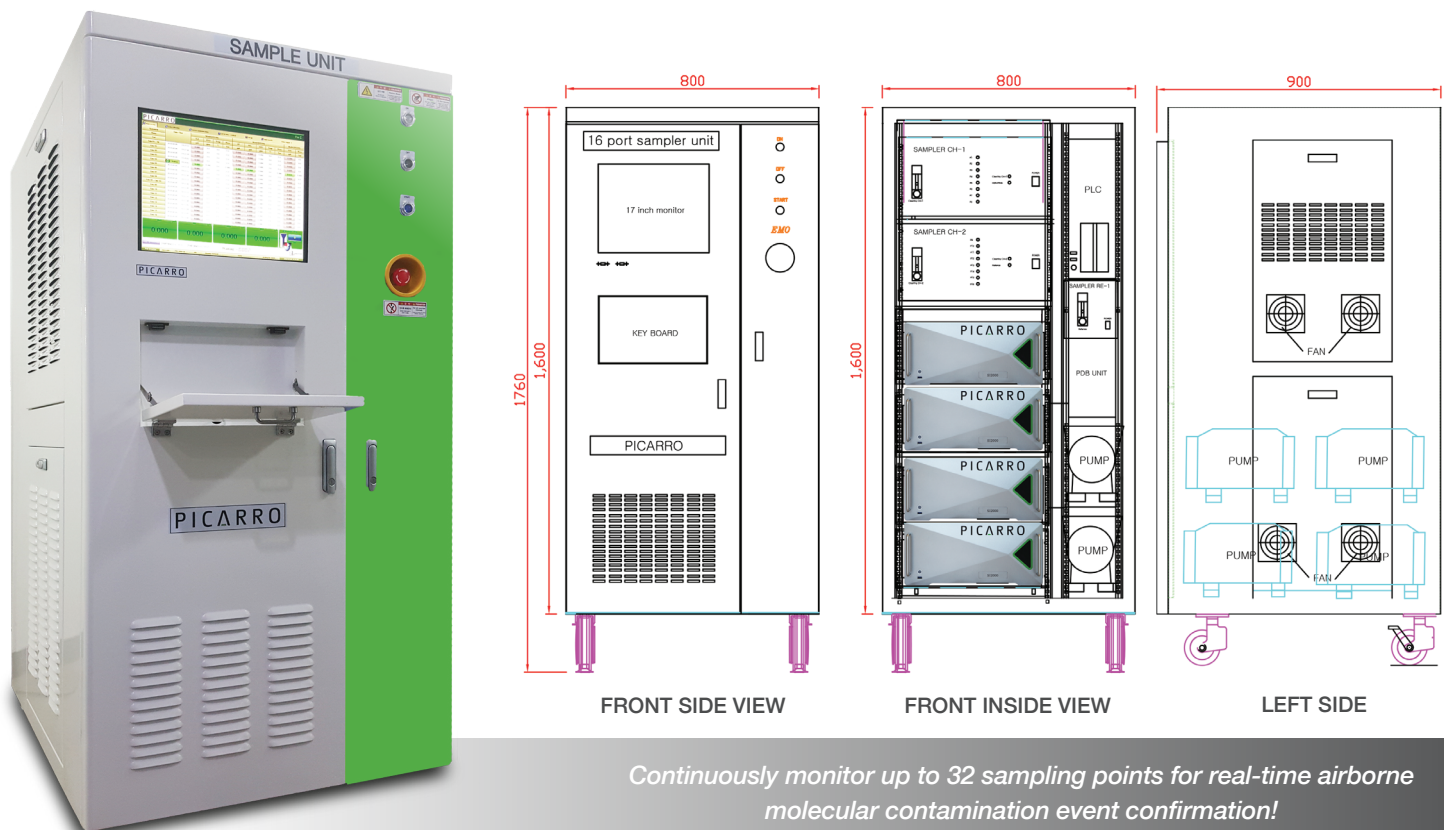
Continuous Process Monitoring AMC System

For HF, HCl, NH₃ and H₂S analyzers

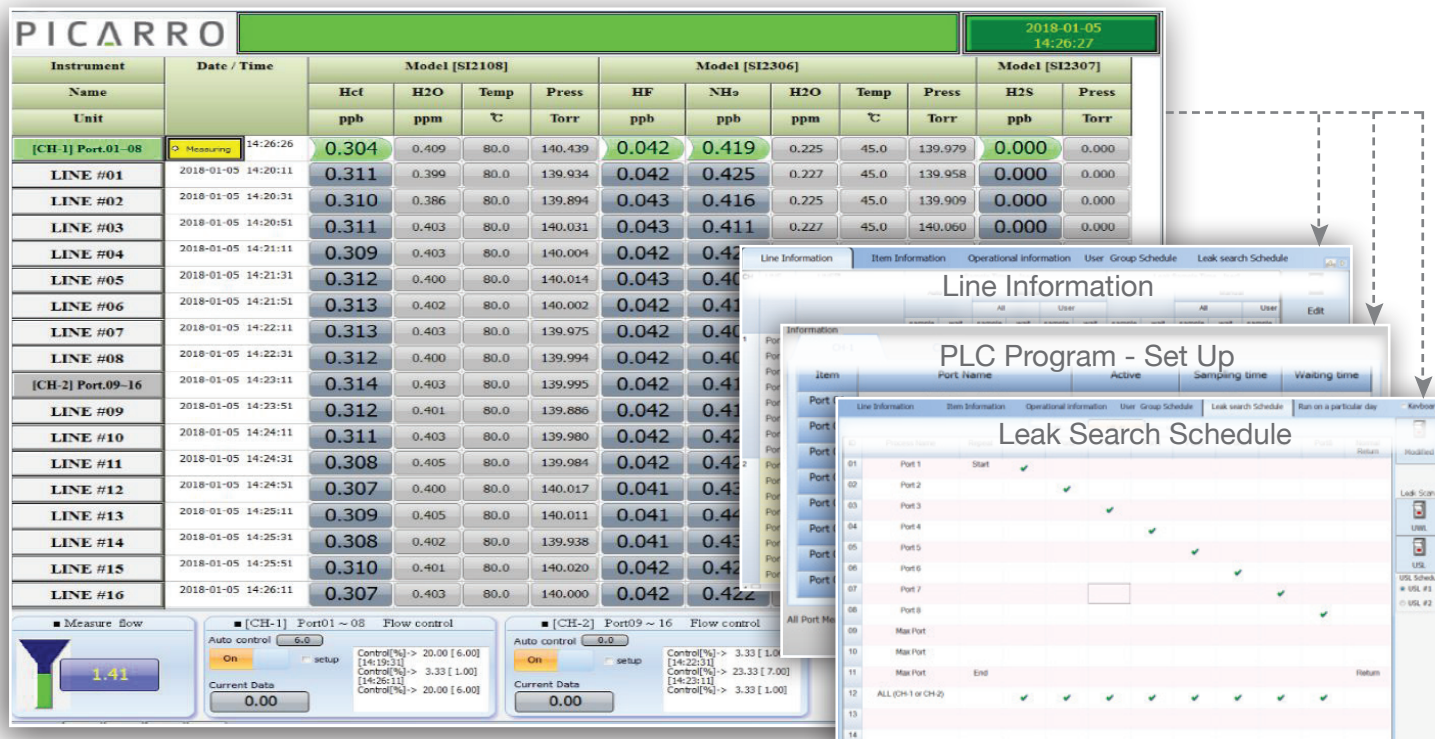
PICARRO

- AMC system designed exclusively to support Picarro analyzer operation
- Simultaneous, continuous flush sequencer module provides very fast sample point scanning cycles
- Fully user-programmable leak search mode
- Configurable for 16, 24 or 32 sample ports
- Recovery from PPM level leak events to normal cleanroom levels in just minutes
- Optimized performance for Picarro SI2000 analyzers

The **Picarro AMC Process Monitoring System** dramatically enhances the value of Picarro gas analyzers by expanding the area of coverage of our analyzers. The System has been designed to optimize response time in the presence of reactive gases with the lowest memory retention in the valves, connectors, sample lines and sequencer components. The Sample Sequencer Module utilizes a SilcoNert-coated mass flow controller and a fast flow, high volume vacuum pump to draw sample as far away as 200 meters. The robust sequencer design is ideal for fast switching between different stocker locations, and for covering large areas in the fab or sub-fab and plenum areas. These highly reliable components assure the best performing system for AMC Process Monitoring with our Picarro SI2000 Series analyzers.



Picarro Sample System Status Screen



AMC Process Monitoring System Software

User-selectable default and customizable programs are available for setting multiple sample point scanning & search modes. Default sample point cycle times are recommended at approximately 30 seconds each, but the Sequencer Module can be set to scan through each 8-port system at two to three times this rate or faster, if required. User-programmed scenarios can also be programmed to optimize the locations of leak events, or for monitoring the leak size over time (from low level PPT concentrations into the PPB levels), and for monitoring the potential leaks over as many as 32 sample points (or more) simultaneously. Both automatic and manual modes are available for leak search schemes. Preventive maintenance cleaning cycles can be programmed on a periodic basis and System Status screens will easily indicate each sample point composition and unique pressure & temperature readings. With the high flow, continuous flush design of each Sequencer module and proper annual sample line maintenance, frequent or excessive flushing of long distance sample lines should never be necessary - even after a significantly high concentration gas leak event in the PPM concentration levels.

A0317 Sample System Specification

Model Numbers	A0317-16	A0317-24	A0317-32
Power Consumption	500 W	700 W	900 W
Power Requirements	100-110 V, 220-240 V, 50/60 Hz		
Sampling Line	3/8" PFA		
Configuration	Stationary Rack		
Dimensions	31.5" W x 36" D x 70" H (80 x 90 x 178 cm)		
Weight	485 lbs. (220 kg)		
Sample Pump Max. Flow Rate	60 liter/min		
Operating Conditions	5-40°C		
Ambient Humidity	<99% RH non-condensing		

PICARRO

© 2018 PICARRO, INC.
41-0041 Rev A
LIT CODE: A0317-DS23-V1.0-180629

3105 Patrick Henry Drive, Santa Clara, CA 95054 | 408-962-3900 | sales@picarro.com | picarro.com

DISTRIBUTED / MARKETED BY: **innospectra** www.innospectra.com